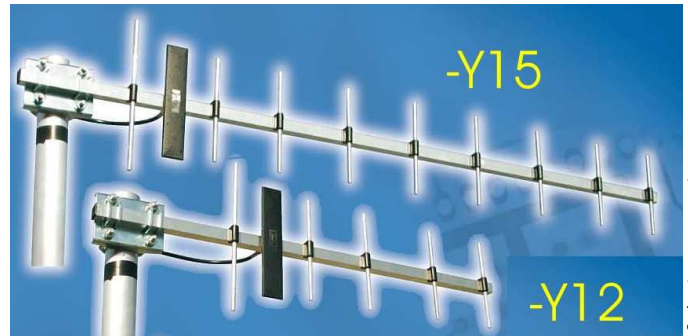
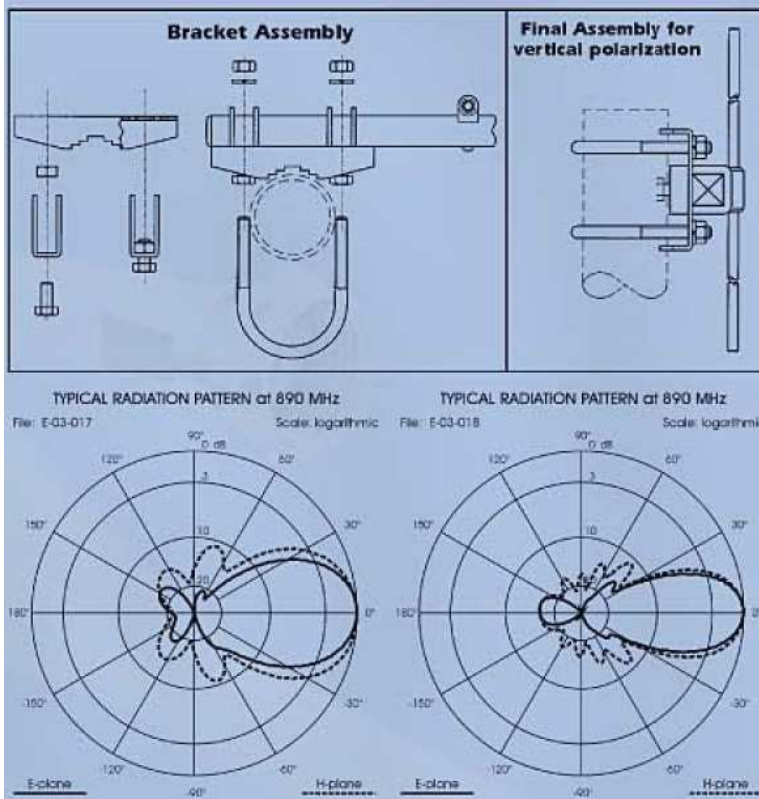


- Base station antenna, directional
- Mono-band 824-960MHz, High gain
- Vertical polarization
- Mounting Mast Ø 25-42mm
- Protection from static discharges
- Anodised aluminium alloy
- 2 versions (11.5dBi et 15dBi)



Antenna Mounting



TECHNICAL SPECIFICATIONS

ELECTRICAL DATA

- Type: ANT868-Y12 : 6 elements yagi antenna, ANT868-Y15 : 10 elements yagi antenna
- Frequency range : 824-960MHz
- Impedance : 50 ohms unbalanced
- Gain : ANT868-Y12 : 11.5dBi / -Y15 : 15dBi
- Front to back ratio: -Y12 : ≥ 20 dB / -Y15 : ≥ 15 dB
- V.S.W.R : $< 1.4 : 1$ in bandwidth
- Max Power: 10W (CW) at 50°C

MECHANICAL DATA

- All parts are at the ground
- Connector : FME-male
- Wind surface : 0,02 / 0.03m²
- Wind load : 27N / 48N at 150km/h
- Materials : Aluminium, PCB, thermoplastic
- Dimensions : -Y12 : 190x580x60mm
-Y15 : 190x980x60mm
- Weight : -Y12 : 410g
-Y15 : 500g
- Mounting mast Ø 25-42mm